

# Caster Replacement Instructions – Metal Base Chairs

Tools needed: Diagonal wire cutters, rubber, plastic, or rawhide mallet.

1.



Place chair, upside down, on a flat level surface.



Also applies to Standard Tube  
Frame Base

2.

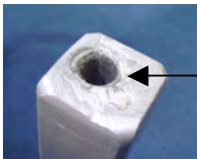


Grip the caster pin, near the base, with channel lock or vise grip pliers. Using a rubber mallet, tap in an upward motion until the caster and pin are removed.

3.

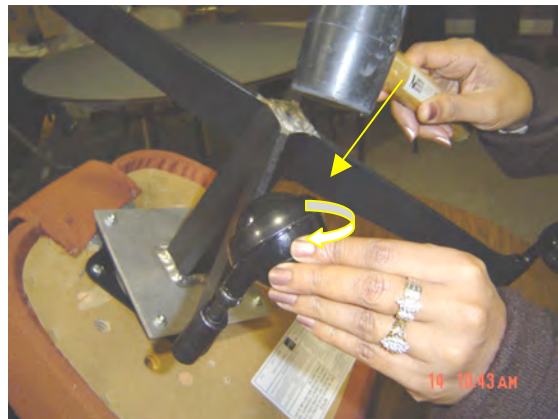


Check the hole in the chair base to make sure that it is free of any obstructions.



Standard Tube Frame  
Base

4.



Align new caster and pin with the hole in the chair base. Using a rubber mallet, tap downwards on the caster. After each hit, rotate the caster so that you do not flatten the caster ball. Continue until the caster is fully seated into the hole in the chair base.